

ANEXA 1 Rev.03-LISTA DE PRETURI

Petrobrazî

Location	Pipeline size	Dimensions of Vessels	Type skid	Dimensions of internal filters	Type	Qty for 1 housing	Filtration rating	Price for 3 vessels €	Price for Skid €	TOTAL €	Unit price internal filter €	Notes
Brazi 1	6"	DN 300	6"	OD: 230mm, Length: 500mm	Unpleated	1	2mm	€ 32.000,00	€ 68.582,37	€ 100.582,37	€ 650,00	
Brazi 2	8"	DN 400	8"	OD: 280mm, Length: 750mm	Unpleated	1	2mm	€ 37.100,00	€ 88.799,50	€ 125.899,50	€ 846,00	
Brazi 3												Se renunta
Brazi 4	3"	DN 250	3"	OD: 180mm, Length: 400mm	Unpleated	1	2mm	€ 28.856,00	€ 32.850,00	€ 61.706,00	€ 762,00	
Brazi 5	3"	DN 250	3"	OD: 180mm, Length: 400mm	Unpleated	1	2mm	€ 28.856,00	€ 32.850,00	€ 61.706,00	€ 762,00	
Brazi 6	8"	DN 450	8"	OD: 315mm, Length: 1000mm	Unpleated	1	2mm	€ 51.800,00	€ 89.457,25	€ 141.257,25	€ 1.075,00	
Brazi 7 Import												Se renunta
Brazi 8 Total	12"	DN 450	12"	OD: 315mm, Length: 1000mm	Pleated	1	2mm	€ 55.800,00	€ 131.750,00	€ 187.550,00	€ 1.075,00	
Brazi 9	12"	DN 450	12"	OD: 315mm, Length: 1000mm	Pleated	1	2mm	€ 55.800,00	€ 131.750,00	€ 187.550,00	€ 1.075,00	

8"

€ 51.800,00 € 89.457,25

€ 141.257,25

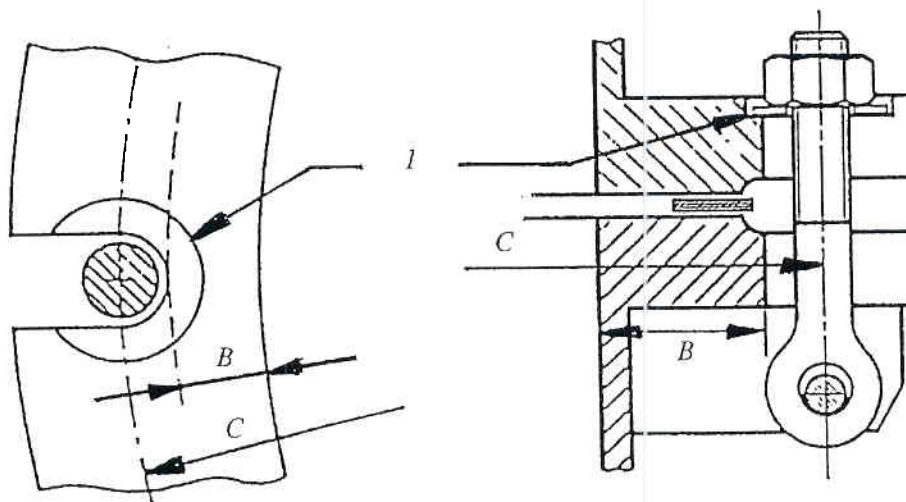


Rectificat la
Brazi 9



C.5.5 Hinged bolts

Hinged bolts to be swung into slots (e.g. eyebolts) shall be secured against slipping off, see Figure C.5.5-1. Nuts and washers shall bear on the entire surface outside the slot.



Key

- l*: Security against sliding
- B*: Flange width (mm)
- C*: Bolt circle diameter (mm)

Figure C.5.5-1 — Flanges assembled by hinged bolts

C.5.6 Yoke-type closures

This type of closure, see Figure C.5.6-1, consists of an external cover which is hinged on one side and closed on the opposite side with one or several closing elements (e.g. tightening screws).

Yoke-type closures for external covers shall be designed so that when the tightening device is opened the cover is lifted off before the yoke can be removed.

The mean diameter of the gasket of a yoke-type closure shall not exceed

- a) 500 mm for pressures $\leq 3,0$ bar
- b) 350 mm for pressures $> 3,0$ bar.

Von: Irimia Tudorel

Gesendet: 11 mai 2017 11:33

An: 'Livi Toader' <toader@cts-romania.net>

Cc: Bucur Marian <M.Bucur@christof.com>; Tudor Iliescu <iliescu@cts-romania.net>; Cornel Tudor <tudor@cts-romania.net>; Marius Barlogeanu <barlogeanu@cts-romania.net>; Office Romania <office@cts-romania.net>; Anghel Dan <D.Anghel@christof.com>; Irimia Tudorel <T.Irimia@christof.com>

Betreff: AW: Estimare bugetara D 2017-016 Rev.03 Oil Basket Strainer Battery-CTS-PBZ

Buna ziua,

Dupa o verificare a ofertei bugetare D 2017-016 Rev.03, am ajuns la concluzia ca s-a strecurat o greseala la copierea datelor din tabelul de calculatii pentru skiduri-le 6" si 8", folosind pretul de la dimensiuni mai mari de skiduri. Atasat gasiti varianta corecta, cu mii de scuze. Mai jos gasiti si detalierea pretului pentru skid "Brazi 1".

Asa cum am vorbit telephonic, daca se comanda intreaga cantitate, va putem da un discount de -10% **dar nu si la filtrele de rezerva. Pretul acestora fiind cel de achizitie.** Credem ca aici ar trebui o negociere directa intre Conpet si furnizor.

Executie legaturi conducte+suporti:	€ 19.956,10
Proiectare skid+legaturi conducte:	€ 5.650,79
Executie structura skid:	€ 9.887,64
Materiale:	€ 21.623,86
NDT RT 100% + certificare skid+conducte:	€ 8.086,91
Protectie anticoroziva skid+conducte	€ 3.376,97
TOTAL OFFER:	€ 68.582,37

Va multumim pentru intelegere.

O zi buna,

Tudorel Irimia.

From: Irimia Tudorel [<mailto:T.Irimia@christof.com>]

Sent: Tuesday, May 9, 2017 10:51 AM

To: Liviu Toader <toader@cts-romania.net>; Marius Barlogeanu <barlogeanu@cts-romania.net>; Office Romania <office@cts-romania.net>; Marius Barlogeanu <barlogeanu@cts-romania.net>; Office Romania <office@cts-romania.net>; Cornel Tudor <tudor@cts-romania.net>

Cc: Bucur Marian <M.Bucur@christof.com>; Irimia Tudorel <T.Irimia@christof.com>

Subject: Estimare bugetara D 2017-016 Rev.03 Oil Basket Strainer Battery-CTS-PBZ

Domnule Toader,

Atasat gasiti estimarea noastra bugetara revizuita (+/-6%) pentru Skidurile PBZ.

Oferta include:

- Proiectare: En 13445+PED pentru vase si EN 13480+PED pentru conducte
- Achizitia materialelor necesare pentru executia vaselor si a skidurilor
- Executia vaselor, structura metalica si legaturi conducte skid
- Sablare si vopsire conform OMV/E&P Norm
- Filtrele interioare conform specificatiei din tabelul atasat.
- Dechidere rapida conform EN 13445-5:2014 C.5.5 Hinged bolts (atasament).
- Control nedistructiv: 100%RT/100%PT pentru vase si 50%RT/100%PT la conducte
- Certificare: Cat. IV pentru vase si Cat. II-III pentru conducte.
- Certificare CE a vaselor cu TUV Romania.
- Probe hidraulice si de etanseitate asistate de TUV Romania si clientul final.
- Documentatie tehnica.

Oferta nu include:

- Izolatie termica
- Tot ce inseamna electric si automatizare
- Transport la clientul final
- Montaj pe pozitie
- Legaturi conducte intre skiduri

Conditille de plata se vor stabili la semnarea contractului.

Sperand ca estimarea noastra satisface asteptarile dumneavoastra, asteptam decizia finala.

Cu stima,

Tudorel Irimia

Calculation, Work Preparation and Controlling

JCR-Christof Consulting Srl.



P +40 344 401 027
M +40 726 555 404
E T.Irimia@christof.com

Strada Trandafirilor 49 A
107084 Sat Brazii de sus / Comuna Brazi, Romania

www.christof.com

Follow Christof Industries

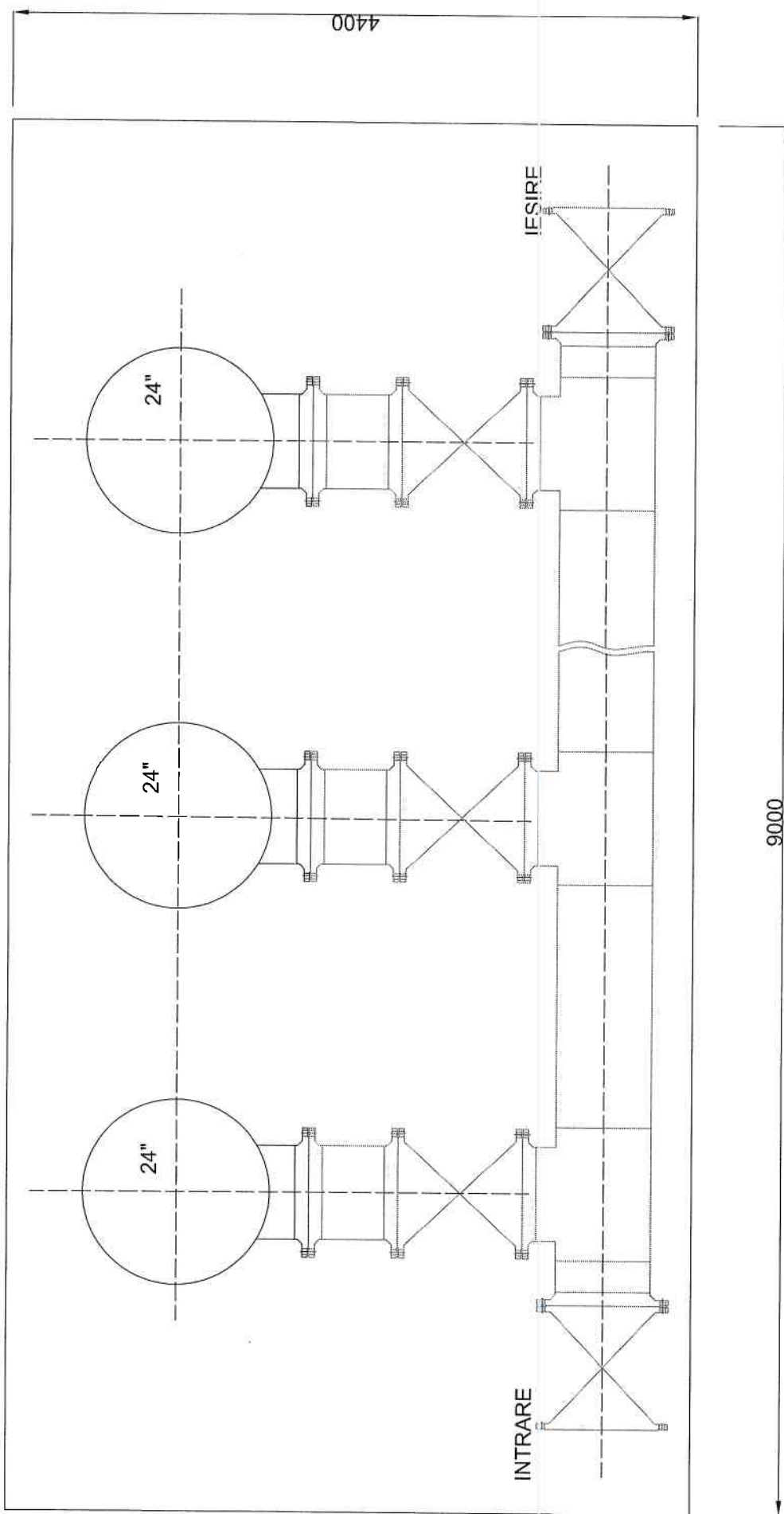


Registered Office: 107084 Sat Brazii de sus / Comuna Brazi; Strada Trandafirilor 49 A, Romania
Managing Director: Franz Kitting-Muhr
No. in Commercial Registry: J 29 / 1097 / 2008, Commercial Registry Ploiesti, VAT-No.: RO22866980

Location	Pipeline size	Dimensions of Vessels	Type skid	Dimensions of internal filters	Type	Qty for 1 housing	Filtration rating	Price for 3 vessels €	Price for Skid €	TOTAL €	Notes
Baicoi Centru	7" SR (6"5/8)			OD: 180mm, Length: 400mm	Unpleated	1	2mm				
Madulari	10"	DN 406		OD: 280mm, Length: 400mm	Unpleated	1	2mm	€ 34.980,00			
Varteju	10"	DN 406		OD: 280mm, Length: 400mm	Unpleated	1	2mm	€ 34.980,00			
Bucsanii	4"	DN 219	4"	OD: 104mm, Length: 250mm	Unpleated	1	2mm	€ 22.650,00	€ 34.600,00	€ 57.250,00	
Ochiuri	6"	DN 323		OD: 180mm, Length: 400mm	Unpleated	1	2mm	€ 30.850,00			
Teis	6"	DN 323		OD: 180mm, Length: 400mm	Unpleated	1	2mm	€ 30.850,00			
Izvoru	6"	DN 323		OD: 180mm, Length: 400mm	Unpleated	1	2mm	€ 30.850,00			
Padure II	6"	DN 323		OD: 180mm, Length: 400mm	Unpleated	1	2mm	€ 30.850,00			
Slobozia	4"	DN 219	4"	OD: 104mm, Length: 250mm	Unpleated	1	2mm	€ 22.650,00	€ 34.600,00	€ 57.250,00	
Aricești	6"	DN 323		OD: 180mm, Length: 400mm	Unpleated	1	2mm	€ 30.850,00			
Saru	6"	DN 323		OD: 180mm, Length: 400mm	Unpleated	1	2mm	€ 30.850,00			
Orja	6"	DN 323		OD: 180mm, Length: 400mm	Unpleated	1	2mm	€ 30.850,00			
Boldesti	8"			OD: 230mm, Length: 500mm	Unpleated	1	2mm				

Petrobrazi

Location	Pipeline size	Dimensions of Vessels	Type skid	Dimensions of internal filters	Type	Qty for 1 housing	Filtration rating	Price for 3 vessels €	Price for Skid €	TOTAL €	Notes
Brazi 1	8"			OD: 230mm, Length: 500mm	Unpleated	1	2mm				
Brazi 2	10"	DN 406		OD: 280mm, Length: 750mm	Unpleated	1	2mm	€ 35.850,00			
Brazi 3	10"	DN 406		OD: 315mm, Length: 1000mm	Pleated	1	2mm	€ 37.100,00			
Brazi 4	8"			OD: 230mm, Length: 400mm	Unpleated	1	2mm				
Brazi 5	12"			OD: 315mm, Length: 400mm	Unpleated	1	2mm				
Brazi 6	12"			OD: 315mm, Length: 1000mm	Unpleated	1	2mm				
Brazi 7 Import	24"	DN 1200	24"	OD: 315mm, Length: 400mm	Unpleated	4	2mm	€ 145.000,00	€ 462.100,00	€ 607.100,00	
Brazi 8 Total	12"			OD: 315mm, Length: 1000mm	Pleated	1	2mm				

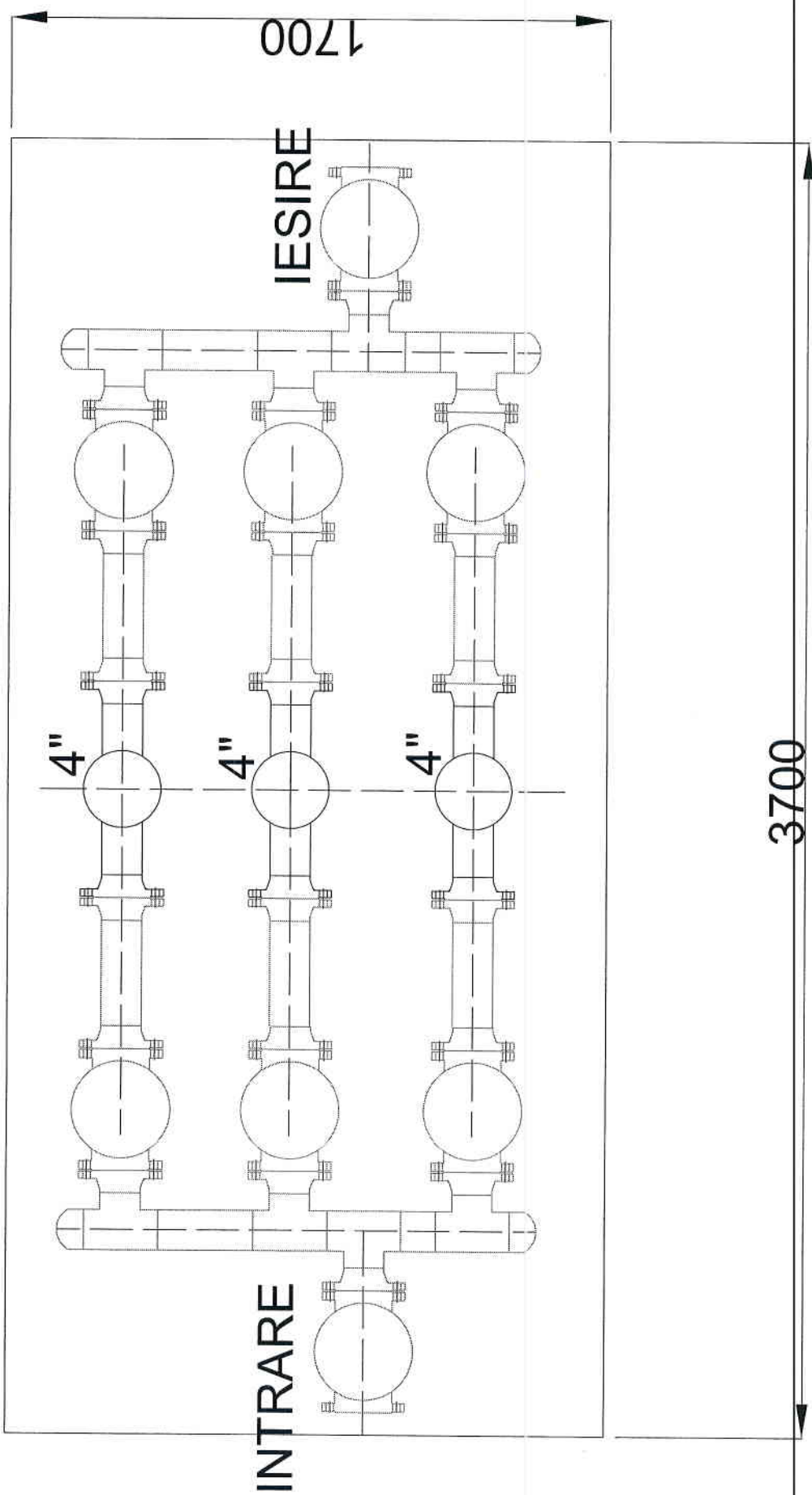


No. crt.	Descriere sau alte indicații / Description	Caracteristici / Characteristic s	Execution Standard	Material Type	Quantity		Revision				Masa / Weight (kg)		Tip certificat de calitate / Quality				Observații / Notes	
					ml	pcs.	0	1	2	3	11	12	13	14	15	16	17	
0	1	2	3	4	5	6	7	8	9	10	11	12	13	14	15	16	17	

Skid pentru filtre (Brazi 7 Import)-Pipeline size - 24"

	Teava DN600 / Pipe DN600	Φ610x16	SR EN 10216-3	P275NL1	20		X							3.1			
	Teava DN25 / Pipe DN25	Φ33.4x4.5	SR EN 10216-3	P275NL1	2		X							3.1			
	Teu egal DN600 Equal tee DN600	Φ610x16	SR EN 10253-2	P355NL1		6	x							3.1			
	Cot 90° DN600 Elbow 90° DN600	Φ610x16	SR EN 10253-2	P355NL1		8	x							3.1			
	Capac DN600 Cap DN600	Φ610x16	SR EN 10253-2	P355NL1		2	x							3.1			
	Robinet su serfar Gate valve	DN600PN16 B	EN 1984	G20Mn5		8	x							3.1			
	Robinet su serfar Gate valve	DN25PN16 B	EN 1984	P285NH		3	x							3.1			
	Flansa cu gat DN25PN16 B Welding neck flange DN25PN16 B	DN25PN16 B	SR EN 1092-1	P285NH		3	X							3.1			
	Garnitura spirometalica DN25PN16 B Spiral wound graphite DN25PN16 B	DN25PN16 B	EN 1514-2	X6CrNiMoTi17-12-2/C-Steel, galvanized/Graphite (1.4571/GRA)		6	X							3.1			

Flansa cu gat DN600PN16 B Welding neck flange DN600PN16 B	DN100PN16 B	SR EN 1092-1	P285NH		20	X					3.1	
Garnitura spirometalica DN600PN16 B Spiral wound graphite DN600PN16 B	DN100PN16 B	EN 1514-2	X6CrNiMoTi17-12-2 2/C-Steel, galvanized/Graphite (1.4571/GRA)		20	X					3.1	
Prezoane Bolts	M33x180	EN 10269	42CrMo4		400	X					3.1	
Piulite Nuts	M33	EN 10269	42CrMo4		800	X					3.1	
Prezoane Bolts	M12x85	EN 10269	42CrMo4		24	X					3.1	
Piulite Nuts	M12	EN 10269	42CrMo4		48	X					3.1	
Weldolet	24"x1"	ASME B16.11	P285NH		3	x					3.1	
Structura metalica skid			S275J2G3			x				22000		
Gratare			S235J2	84mp		x						



No. crt.	Descriere sau alte indicații / Description	Caracteristici / Characteristic S	Execution Standard	Material Type	Quantity		Revision				Masa / Weight (kg)				Tip certificat de calitate / Quality				Observații / Notes	
					ml	pcs.	0	1	2	3	11	12	13	14	15	16	17			
0	1	2	3	4	5	6	7	8	9	10	11	12	13	14	15	16	17			

Skid pentru filtre (Slobozia)-Pipeline size - 4"

	Teava DN100 / Pipe DN100	Φ114.3x7.1	SR EN 10216-3	P275NL1	8		X											3.1	
	Teava DN25 / Pipe DN25	Φ33.4x4.5	SR EN 10216-3	P275NL1	2		X											3.1	
	Teu egal DN100 Equal tee DN100	Φ114.3x7.1	SR EN 10253-2	P355NL1		8	x											3.1	
	Capac DN100 Cap DN100	Φ114.3x7.1	SR EN 10253-2	P355NL1		4	x											3.1	
	Robinet su sertar Gate valve	DN100PN40 B	EN 1984	G20Mn5		8	x											3.1	
	Robinet su sertar Gate valve	DN25PN40 B	EN 1984	P285NH		3	x											3.1	
	Flansa cu gat DN25PN40 B Welding neck flange DN25PN40 B	DN25PN40	SR EN 1092-1	P285NH		3	X											3.1	
	Garnitura spirometalica DN25PN40 B Spiral wound graphite DN25PN40 B	DN25PN40	EN 1514-2	X6CrNiMoTi17-12-2/C-Steel, galvanized/Graphite (1.4571/GRA)		6	X											3.1	
	Flansa cu gat DN100PN40 B Welding neck flange DN100PN40 B	DN100PN40 B	SR EN 1092-1	P285NH		20	X											3.1	

Garnitura spirometalica DN100PN40 B Spiral wound graphit DN100PN40 B	DN100PN40 B	EN 1514-2	X6CrNiMoTi17-12-2 2/C-Steel, galvanized/Graphite (1.4571/GRA)		20	X						3.1	
Prezoane Bolts	M20x120	EN 10269	42CrMo4		160	X						3.1	
Plulite Nuts	M20	EN 10269	42CrMo4		320	X						3.1	
Prezoane Bolts	M12x85	EN 10269	42CrMo4		24	X						3.1	
Plulite Nuts	M12	EN 10269	42CrMo4		48	X						3.1	
Weidolet	4"x1"	ASME B16.11	P285NH		3	x						3.1	
Structura metalica skid			S275J2G3			x					1200		
Gratare			S235J2	6mp		x							